

# George Abbot Bulletin

20 June 2025



## Message from Mrs Carriett:

We will continue our current uniform flexibility into next week. A reminder that students should wear their House polo shirt, PE shorts or skirt and trainers whilst the high temperatures remain with us.

School has been buzzing with activity and will continue to do so as we approach the end of the school year. Some of the highlights of the last fortnight include:

- Our 2 Varsity sport events - George v Abbot - read on to find out who reigns victorious
- National Junior Maths challenges for our talented mathematicians
- The Year 10 Biology trip to Wisley
- The Year 9 trip to Willen Lakes - a great day of water-based adventure
- The Year 9 MFL and Football event
- Our lower school singers participated in the Choir Blast festival
- Our Big Band entertained villagers at the Shamley Green Fete
- Year 8 enjoyed our second Science Festival with experiments and BBQ
- A group of Year 10 students attended a Model United Nations event
- Our Young Carers have enjoyed some bowling and fun with friends
- Some Years 9s have been busy delivering Spanish workshops at Merrow Primary
- Our Year 10s and 12s have begun their end of year exams
- Our Year 11s have finished their GCSEs and attended their Prom at Surrey University
- Most of our Year 13s have finished their A Levels - just Further Maths to go on Monday

As we move into the next fortnight, we have many more activities to come:

- Year 11 Thorpe Park and London trips
- Last rehearsal phase and performance week for Charlie and the Chocolate Factory - tickets can be booked from Monday - please do come and support us. To buy tickets, please visit: <https://www.ticketsource.co.uk/gabbotperformingarts> and use the following password: GASPAD25.
- DofE Silver expedition
- Year 11 into 12, Sixth Form Induction Day
- Our Moloney Garden Opening Ceremony
- Our end of year Surrey Cricket Scholar match and tea
- Year 13 Prom
- New Year 7 transition days
- Some of our Year 9s are taking part in an inter school sustainability challenge
- Year 10 undertake their virtual work experience led by the NHS and EDF, facilitated by our careers team and the careers platform, Unifrog
- Some Year 12s head out to Guildford Crown Court
- Year 7-10 Prizegiving
- Our Park, Ride and Stride Challenge continues, with the aim of reducing our eco impact

I so hope that all of our students will find enjoyment and enrichment in these opportunities. It matters very much that we facilitate that for all of them.

**Save the Date:** Our Year 7-10 Prizegiving is taking place on Friday 4 July. If your child has won a prize, we will let you know next week. The order of year groups is:

- 9.00am—Year 7
- 10.45am—Year 10
- 12.30pm—Year 9
- 2.15pm—Year 8

**Reminder:** INSET Day is on **Monday 30 June**.

[Return to home page](#)



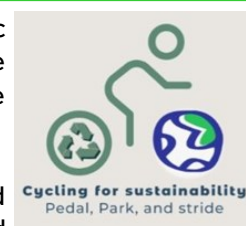
**GvA Varsity:** This year saw the launch of an exciting new addition to our school calendar – a whole-school sports event that brought together students, staff, and families in a celebration of athletic talent, teamwork, and school spirit. The event was a resounding success, with an impressive number of students taking part and showcasing the high standard of sport that our PE department is proud to offer. It was particularly heartening to see so many parents and carers in attendance, cheering on their children and contributing to the fantastic atmosphere throughout the day. Their support helped make the occasion truly memorable for everyone involved.

In a friendly yet competitive format, the school was split into two halves, who competed across a range of sports. After a thrilling day of action, George half emerged victorious! However, the real triumph was the sense of unity, enjoyment, and pride shared by all participants. We look forward to building on this success and watching the event grow in the coming years. A huge thank you goes to everyone who took part, supported, or helped organise the day. We couldn't have done it without you!

**Pedal, Park and Stride—16 June to 4 July:** We are delighted with the incredibly enthusiastic response by our students to participating in the Pedal Park and Stride Campaign. The average number of cyclists has more than doubled this week and our bike shelters are bursting. We appreciate how many of our young people are wearing helmets too.

Cyclists should look out next week for a golden padlock attached to their bike on Tuesday and Thursday. Golden padlock winners can ask for Ms Wallace-Jones to unlock the padlock and give them a prize at the end of the day!

And thank you to our Park and Stride students and their families too. It's great to see you being dropped off at friends' houses or further down the road and walking in. A continued plea for parents/carers to not enter the road in front of the school gate for drop off nor stop in the no parking zone indicated by the double yellow lines and zig-zag. Our drop-off count has shown a slight decrease in drop-offs outside the school gate which is an absolute win for both congestion and air pollution outside of the school. It would be great to see this fall even further over the next two weeks of the campaign and the weather is in our favour.



**Help us expand our dining & social space for students!** We are raising £75,000 to help us expand our dining and social space for students. As one of the largest secondary schools in the area, we currently face the challenge of not having enough dining space to accommodate all of our students. To address this, we are launching a project to create a new, dedicated dining space. This new area will allow students to eat comfortably, enjoy a meal with friends and provide a sheltered space where they can socialise, relax, and take refuge from the elements during breaks, especially on rainy or colder days. By improving the existing facilities, we aim to create a much-needed hub for students to unwind and interact, making their time at school more enjoyable.

Our target is to complete the expansion by the summer of 2027 at the latest. Every donation, big or small, makes a difference. Your generosity will directly impact the lives of our students, providing them with a dedicated space to eat, socialise, and relax. [Please share this page with family, friends, colleagues, and the wider community.](#) The more people who know about the project, the more support we can gather to reach our fundraising target.

GAbbot Fest returns on Friday 11 July 2025, it will, hopefully, be a wonderful day for students to get involved and fundraise for this year's charities; Sierra Leone Development and Relief Aid, Show Racism the Red Card and Shooting Star Children's Hospices. Applications to run a stall are now closed. Students will hear via email if they are successful by Monday 23 June.

MCAS donations are exchanged for tokens (50p a token). We will be using a new style of bespoke token for purchases; any tokens currently in circulation will NOT be accepted. Tokens will be issued to students on the morning of the Festival during tutor time. Please note we will open MCAS on Monday 23 June and will close on Tuesday 8 July, in order to give us time to organise the tokens ready for handing out. If you have any payment queries, please email [finance@georgeabbot.surrey.sch.uk](mailto:finance@georgeabbot.surrey.sch.uk). Please note, any unspent tokens will not be refunded as the money is being donated to charity.

We are also looking for donations of old tablecloths or bedsheets that you no longer need for this year's GAbbotFest. If you think you have something suitable, please drop it into Elmslie Reception for Miss Sellers. Any donations would be greatly appreciated.



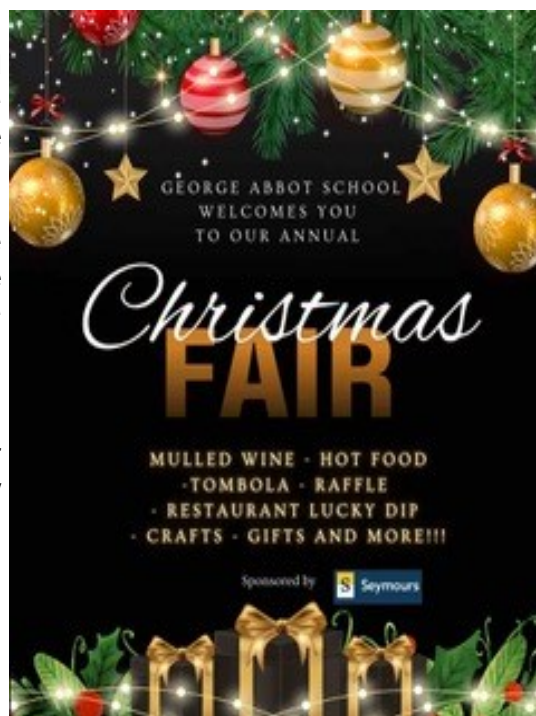
[Return to home page](#)

|                            |   |
|----------------------------|---|
| <p><b>Notices</b></p>      | <p>Week commencing 23 June = Week B<br/> Week commencing 26 May = Half Term<br/> Week commencing 30 June = Week A</p>   |
| <p><b>Whole School</b></p> | <p>⇒ <b>Pride Month</b><br/> June is LGBTQ+ Pride Month across the world and as a school we are celebrating this month with a number of activities both inside and outside of the classroom. As a school, Pride Month gives us an opportunity to question and understand the history of the LGBTQ+ community and its relevance to our local and global community. To support this learning, a number of departments around this school are highlighting LGBTQ+ voices and experiences in lessons – with poetry within English and as part of the Year 8 Civil Rights unit in History. These themes have also been highlighted in Form Time including through Find Your Voice activities as well assemblies. Please take the time this month to support our community in celebrating LGBTQ+ Pride Month.</p> <p>⇒ <b>Antihistamines and Allergy Management</b><br/> As we move through the allergy season, we kindly ask parents and carers to ensure that their child takes any necessary antihistamines or allergy medication before coming to school. This helps us manage symptoms effectively during the school day and ensures your child can focus and participate fully in lessons and activities.</p> <p>If your child requires medication during school hours, please make sure the school has the appropriate permissions and medication on file. Thank you for your continued support in keeping our students healthy and comfortable.</p> <p>⇒ <b>Non-uniform day—Friday 11 July</b><br/> A reminder that there will be a non-uniform day on Friday 11 July. We are asking for a £1 voluntary contribution to be made via MCAS which will be donated to the Gabbotfest student-nominated charities (see overleaf).</p> <p>⇒ <b>Jam jars and herb jars</b><br/> The Sustainability team are looking for jam jars and herb jars (with lids) for GabbotFest. Please drop off to Reception if you have any spare.</p> <p>⇒ <b>Term Dates 2026-27</b><br/> Please <a href="#">click here</a> to view the published term dates for 2026-27, incorporating a two-week October half term. These term dates apply to all Learning Partners Schools and are being widely adopted across Surrey’s primary and secondary schools.</p> <p>⇒ <b>Vacancies</b><br/> Please see the following page of the school website for further details on our current vacancies: <a href="https://www.georgeabbot.surrey.sch.uk/recruitment/">https://www.georgeabbot.surrey.sch.uk/recruitment/</a>. Please do forward to any friends or colleagues you think might be interested. Current opportunities:</p> <ul style="list-style-type: none"> <li>• Cover Supervisor</li> </ul> |
| <p><b>Year 11</b></p>      | <p>⇒ <b>Returning school books, revision guides, Maths equipment and school uniform</b><br/> Please remind your child to drop off any remaining library books, English Literature texts, and Maths equipment (including calculators) when they attend the Sixth Form Induction Day on Tuesday 24 June. Additionally, please help us with our sustainability vision by donating any no-longer-needed GCSE revision guides and school uniform - just ask your child to drop these items between the sliding doors in Raynham Foyer and we will do the rest!</p>   |
| <p><b>Year 9</b></p>       | <p>⇒ <b>Poetry Competition</b><br/> Year 9 have recently completed a poetry assessment in class. There is the opportunity for students to enter their work for the Foyle Young Poets of the Year competition. Please use the following link to enter: <a href="https://poetrysociety.org.uk/competitions/foyle-young-poets-of-the-year-award/">https://poetrysociety.org.uk/competitions/foyle-young-poets-of-the-year-award/</a></p>   |

## It's June... time to get ready for Christmas!

[Seymours estate agents](#) have once again very generously offered to sponsor our Christmas fair, which this year will take place on **Sunday 30 November** - save the date. Seymours will give the PTA £25 for every board that they can display at peoples' homes. If you are willing to have a board up and you live in the **Burpham, Merrow or Jacobs Well** areas, please complete the [George Abbot Christmas Fair Estate Agent Board form](#). We are asking now because they have a deadline shortly after the summer holiday. Trust me, it won't be long before the supermarkets start selling mince pies...

Talking of supermarkets, have you signed up yet for our [Sainsbury's Scheme](#)? If everybody did it, we'd have that new dining area in no time... If you prefer online shopping, please consider using [Easyfundraising](#) instead, with, of course, George Abbot PTA as your preferred charity!



## Focus on

Our recent Year 12 Life Skills session was 'Cooking on a Budget'. Students went shopping and bought a fairly basic bag of ingredients. They then made a tomato sauce, which created a pizza topping, a meat sauce, some meatballs and a chilli sauce. This was not only an important message on how far one bag of inexpensive ingredients can go, but also a lesson in batch cooking, cooking in advance and freezing meals.



## Careers

Careers opportunities: <https://www.georgeabbot.surrey.sch.uk/careers-opportunities/>

Apprenticeship opportunities: <https://www.georgeabbot.surrey.sch.uk/apprenticeship-opportunities/>

Work Experience opportunities: <https://www.georgeabbot.surrey.sch.uk/work-experience/>

# Club4 Holiday Vouchers

The Club4 programme, also known as the Holiday Activities and Food Programme (HAF) is back for the **summer 2025 school holidays**. Funded by the Department for Education, this programme is for children in current year Reception – current **School Year 11** who are eligible for benefits related free school meals.

## What's new for summer?

We've launched a new booking platform to make it easier for parents and carers to browse and book holiday camps and experiences. Summer bookings are live.

Holiday Activity Vouchers will still be sent to eligible families. When the voucher is clicked, parents are taken directly to the new booking platform. However, families don't need to wait for their voucher to arrive. The new booking platform is accessible via a weblink, allowing families to browse and register their interest now; <https://www.eequ.org/club4activesurrey>

Please see the Club4 Parent Guide – Summer 2025 [by clicking here](#).

# Community Notices

**What Parents & Educators Need to Know about GENERATIVE AI SAFETY**

Generative AI tools – such as ChatGPT – are now commonly used by children. In fact, 3 in 4 pupils in the 2024 Annual Literacy Survey reported using generative AI, up from just 7 in 10 the previous year. While these tools can boost learning and creativity, they also raise concerns around misinformation, privacy and misuse. This guide explores the key risks and how to support safe use.

**WHAT ARE THE RISKS?**

- MISINFORMATION AND ACCURACY**: Generative AI can sometimes produce false or misleading content. Children – and even adults – may struggle to distinguish between accurate and inaccurate information. This can affect learning and understanding of important topics. It's vital to teach children to critically assess all information, even when generated by AI.
- EXPOSURE TO INAPPROPRIATE CONTENT**: Generative AI is trained on vast amounts of data from across the internet, there is a risk of inappropriate or harmful content being generated. Without appropriate safeguards, children could encounter disturbing or unsuitable content. Active measures should be taken to limit exposure to inappropriate content.
- PRIVACY AND DATA SECURITY**: Some AI tools ask for personal details or sensitive information. If privacy settings are not correctly configured, children's personal data could be accessed or misused. Encourage good digital hygiene and setting strong privacy controls to minimise personal data exposure.
- REDUCED CRITICAL THINKING**: Relying too heavily on AI-generated responses may reduce children's willingness to think independently. If they consistently use AI to solve problems or complete tasks, it could impact their ability to reason, analyse and form their own views. Encouraging thoughtful responses is key.
- DIGITAL DEPENDENCY**: Regular use of generative AI can contribute to increased screen time and less face-to-face interaction. If not managed, it may affect social skills, mental health and social development. Limiting a healthy balance between online and offline activities is important for wellbeing.
- UNCLEAR ETHICAL BOUNDARIES**: Children may not fully understand the ethical implications of using AI to complete homework or create content. This could lead to inappropriate or dishonest academic practices. Conversations around acceptable use and academic honesty are crucial.

**Advice for Parents & Educators**

- ESTABLISH CLEAR GUIDELINES**: Set clear, age-appropriate rules for when and how generative AI can be used. Reinforce these regularly to help children develop a healthy, respectful and informed relationship with the technology.
- PROMOTE ACTIVE SUPERVISION**: Keep an eye on how children use AI tools. Check regularly to ensure they are using them appropriately and be ready to step in if something doesn't feel right.
- ENCOURAGE CRITICAL EVALUATION**: Help children to question the accuracy of AI-generated information and seek out additional trusted sources. This builds essential digital literacy skills and supports better decision-making.
- ENHANCE PRIVACY AWARENESS**: Talk to children about the importance of keeping personal information private. Use privacy settings and be clear on what can be shared with AI tools that can be used.

**Meet Our Expert**  
 Brendan O'Neill, Deputy Headmaster and Director of Digital Strategy at Eton House School, has extensive experience in digital safety, safeguarding and generative AI in education. An author and speaker on digital literacy and online safety for educators such as The National College, Brendan guides parents and educators in creating safe digital learning environments.

**Wake Up Wednesday**  
 The National College

Users of this guide do so at their own discretion. No liability is entered into. Current as of the date of release: 10.06.2025

**Enter our Super Draw**

**Win a Nintendo Switch 2 Mega Bundle!**  
**OR £1,000 CASH PRIZE**

**GUILDFORD COMMUNITY LOTTERY**

**GEORGE ABBOT SCHOOL**

**THE GREATEST SHOWMAN!**  
 shine time  
 musical theatre and dance

**COME ALIVE AT OUR SUMMER SCHOOL**  
**Monday 28th July - Friday 1st August**

The Trinity Centre, Guildford. 10:00am - 4:00pm. £160-00. Ages 5 - 16.  
 Week concludes in a performance!

07880 721689 info@shinetimeworkshops.com  
 www.shinetimeworkshops.com

George Abbot School, Woodruff Avenue, Guildford, GU1 1XX  
 01483 888000 - [www.georgeabbot.surrey.sch.uk](http://www.georgeabbot.surrey.sch.uk)  
 DSL: Mrs T Young - [dsl@georgeabbot.surrey.sch.uk](mailto:dsl@georgeabbot.surrey.sch.uk)