

# YEAR 12 WORK EXPERIENCE WEEK

Monday 3<sup>rd</sup> – Friday 7<sup>th</sup> March 2025



- A week 'off timetable' to complete a work experience placement.
- We encourage you to arrange your own placements by contacting companies/organisations yourselves so that you get the 'job search' experience.

[workexp@georgeabbot.surrey.sch.uk](mailto:workexp@georgeabbot.surrey.sch.uk)

**CAREERS ... at George Abbot**

EXPLORE

ASPIRE

ACHIEVE

# YEAR 12 WORK EXPERIENCE WEEK

Monday 3<sup>rd</sup> – Friday 7<sup>th</sup> March 2025



## So, what is work experience?

- A short term placement with an employer
- Unpaid
- Observe and work alongside people at work
- Find out more about a career, industry or organisation
- You could do 5 days with one employer or 2/3 days mix of two employers
- You may wish to chat to different employees at your placement about what they studied/their careers path/their future career goals

# YEAR 12 WORK EXPERIENCE WEEK

Monday 3<sup>rd</sup> – Friday 7<sup>th</sup> March 2025



## What are the benefits of work experience?

- It supports your UCAS application
- Job and apprenticeship ads often ask for people with experience
- It enhances your 'employability skills'
- A method of exploring different careers without committing to a job or study course
- Certain careers will expect you to complete multiple placements eg. medicine, veterinary, dentistry
- An opportunity to network – it might lead to a future job offer!

**“Conservation work with wildlife”**

**“I was able to solve problems which occurred”**

**“Helped with wiring to be used on a lunar satellite planned for launch in 2025”**

**“Seeing students improve based on the feedback I gave them”**

**“I was on time!”**

**“I travelled to and from Reading successfully include taking a 30 minute bus and 1hr train”**

**What did you do during the week that you were most proud of?**

**“I was very independent”**

**“Stripped a Mercedes GLC (AMG) front bumper”**

**“Making a patient’s day by having friendly conversations”**

**“I presented about what I had learnt and enjoyed in the week in front of the Retail Operations Manager, and it also got shown to the Head of Retail”**

**“Witnessed surgeries”**

**“I did research for them for a work trip and put together a brochure of information they will need for the trip”**



**[workexp@georgeabbot.surrey.sch.uk](mailto:workexp@georgeabbot.surrey.sch.uk)**

Get it sorted  
early!!!!

Find something  
genuinely beneficial to  
you, it's a week off  
school to aid your uni  
applications.

**If you could offer any advice to the 2024/25 Year 12 students, what would it be?**

Don't stress, find  
something that may  
help with your future,  
if not, find anything as  
it is experience after all

Email lots of people,  
ask friends, ask  
teachers. It's easier to  
get a placement  
through connections

# YEAR 12 WORK EXPERIENCE WEEK

Monday 3<sup>rd</sup> – Friday 7<sup>th</sup> March 2025



**PLEASE DO NOT WORRY.....we are here to help you!!**

[workexp@georgeabbot.surrey.sch.uk](mailto:workexp@georgeabbot.surrey.sch.uk)

**CAREERS ... at George Abbot**

**EXPLORE**

**ASPIRE**

**ACHIEVE**



# Where did our students go in 2024?





George Abbot School

# CAREERS FAIR



Wednesday

23/10/2024

**10:30 AM - 14:00 PM**

Companies from a variety of  
industries and sectors

Designed by Michael L



# WHEN YOU FIND A PLACEMENT:



unifrog

HOME

FAVOURITES

LOCKER

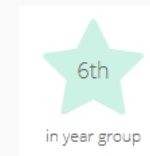
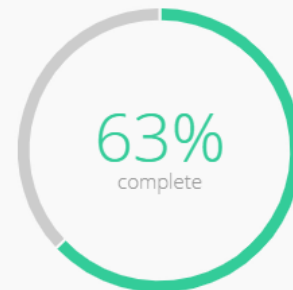
APPLY

HELP



TEACHER >

Hello Fiona, here's a summary of your progress so far...

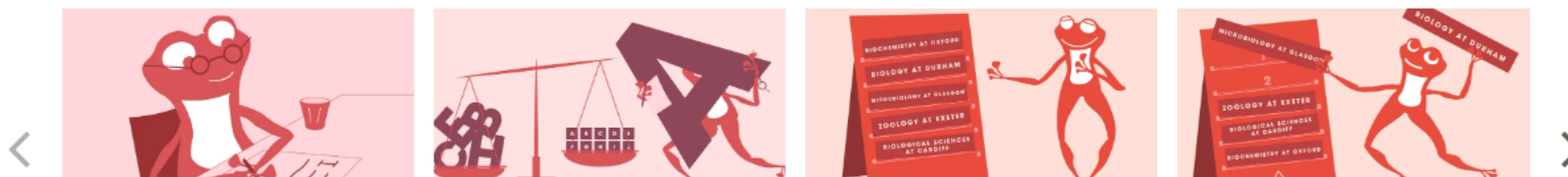


Want to move things forward? We recommend you...

Start your [Personal Statement](#)

1.4%

## YOUR NEXT TASKS:



Ages 11-14

Ages 14-16

All tools

## Exploring pathways

### Careers library

✓ Careers favoured

[Go to tool >](#)

### Subjects library

✓ Subjects favoured

[Go to tool >](#)

### Know-how library

✗ Guides favoured

[Go to tool >](#)

### Courses

✓ 1 course added, 0 completed

[Go to tool >](#)

### MOOC

Make your first shortlist

[Start >](#)

### Unifrog events

Interact directly with experts

[Go to tool >](#)

### Read, Watch, Listen

✓ Profiles favoured

[Start >](#)

### Placements

✓ 1 placement added, 0 completed

[Go to tool >](#)

## Placements

Here you can add work experience placements, fill in your forms, and check the progress of employer, parent and school coordinator forms. Want an overview of how organising a placement works? [See the whole process >](#)

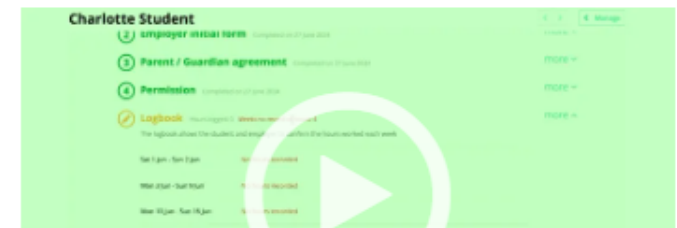
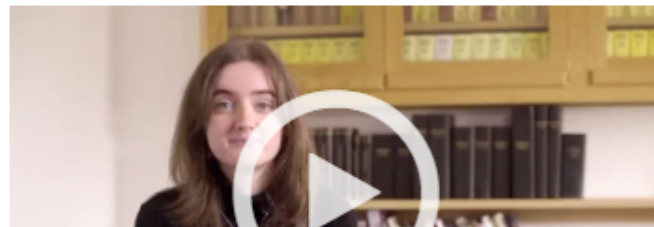


### 0 placements added so far

Only add a placement **after** you've been in contact with the employer, and they have agreed to host you.

[+ Add new placement](#)

## Some inspiration from the Know-how library



# AFTER THE PLACEMENT:



- Complete a WORK EXPERIENCE JOURNAL on Unifrog and save this to your Unifrog Locker
- Write a thank you email to your host

[workexp@georgeabbot.surrey.sch.uk](mailto:workexp@georgeabbot.surrey.sch.uk)