



George Abbot School

ART & DESIGN

Fine Art, Graphic Communication, Photography and Textile Design

CURRICULUM JOURNEY

What can I do with Art qualifications?



- Architecture
- Creative technologies
- Fashion
- Interior design
- Web and digital design
- Textile design and manufacture
- Graphic communication Animation
- Conservation and restoration
- History of Art curation and education
- Film and television
- Product design
- Photography
- 3D design
- Advertising
- Marketing
- Journalism
- Set design
- Animation
- Illustrator
- Computer visualisations
- Curator
- Digital media

GCSE AND A-LEVEL EXTRA-CURRICULAR –

- Intervention and catch-up sessions
- Independent study
- Skills based workshops
- Gallery visits and trips
- Competitions

Art and Design GCSE and A-Level: Areas of study			
FINE ART	GRAPHIC COMMUNICATION	PHOTOGRAPHY	TEXTILE DESIGN
<ul style="list-style-type: none"> • Drawing • Painting • Sculpture • Installation • Printmaking • Mixed-media • Photography and moving image • Lens and light-based media 	<ul style="list-style-type: none"> • Communication graphics • Advertising and branding • Typography • Package design • Multi-media 	<ul style="list-style-type: none"> • Portraiture/ landscape/ studio/ documentary/ fashion photography • Installation • Photo-journalism • Moving image • Film and video animation • A-Level students will have access to the darkroom studio for film and chemical processes. 	<ul style="list-style-type: none"> • Fashion design and illustration • Constructed textiles • Painted and dyed textiles • Surface pattern • Stitched and embellished textiles • Fashion and costume design and or textiles for interiors



A-LEVEL

Assessment Objectives: AO1, AO2, AO3, AO4

Art and Design: Fine Art, Photography, Textile Design, Graphic Communication

AQA - COMPONENT 1
Personal Investigation
60% of overall A-Level grade

- A sustained project focused on a personal investigation that develops a response to a theme.
- A selection of skills based work created in response to the Art and Design assessment objectives.

AQA - COMPONENT 2
Externally set assessment (ESA)
40% of overall A-Level grade

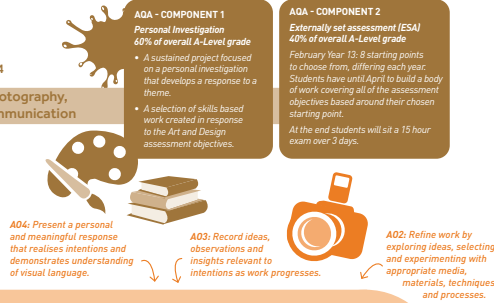
February Year 13: 8 starting points to choose from, differing each year. Students have until April to build a body of work covering all of the assessment objectives based around their chosen starting point. At the end students will sit a 15 hour exam over 3 days.

AQA - COMPONENT 2
Externally set assessment (ESA)
40% of overall GCSE grade

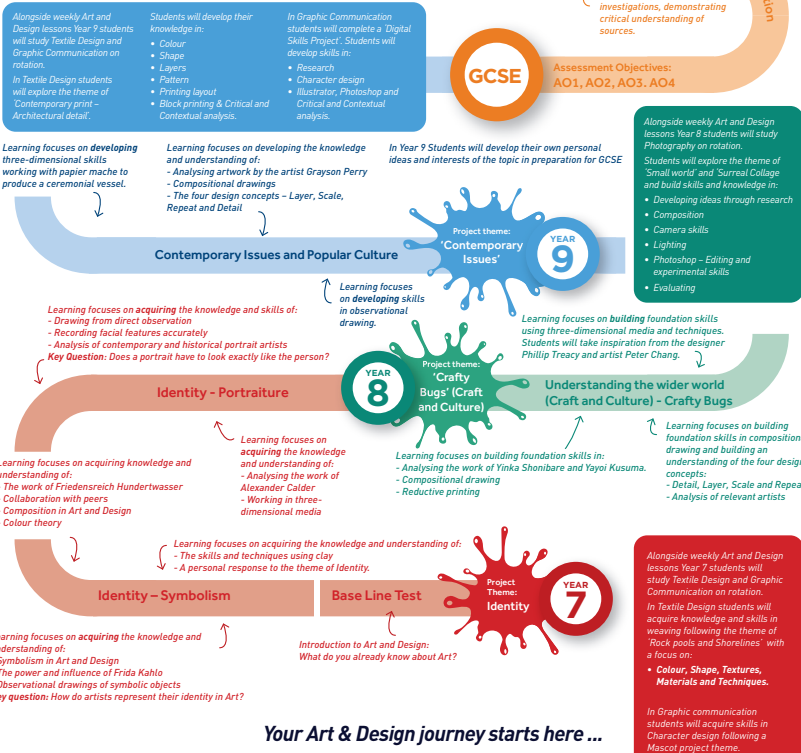
January Year 11: 7 starting points to choose from, differing each year. Students have until April to build a body of work covering all of the assessment objectives based around their chosen starting point. At the end students will sit a 10 hour exam over 2 days.

AQA - COMPONENT 1
Portfolio
60% of overall GCSE grade

- A sustained project developed in response to a theme.
- A selection of skills based work created in response to the Art and Design assessment objectives.



Art and Design: Fine Art, Photography, Textile Design, Graphic Communication



Your Art & Design journey starts here ...