



Post 16 Options

Presentation by Activate Learning

Surrey Colleges:

Farnham College, Guildford College

Merrist Wood College

Christine Hill
School Partnership Executive

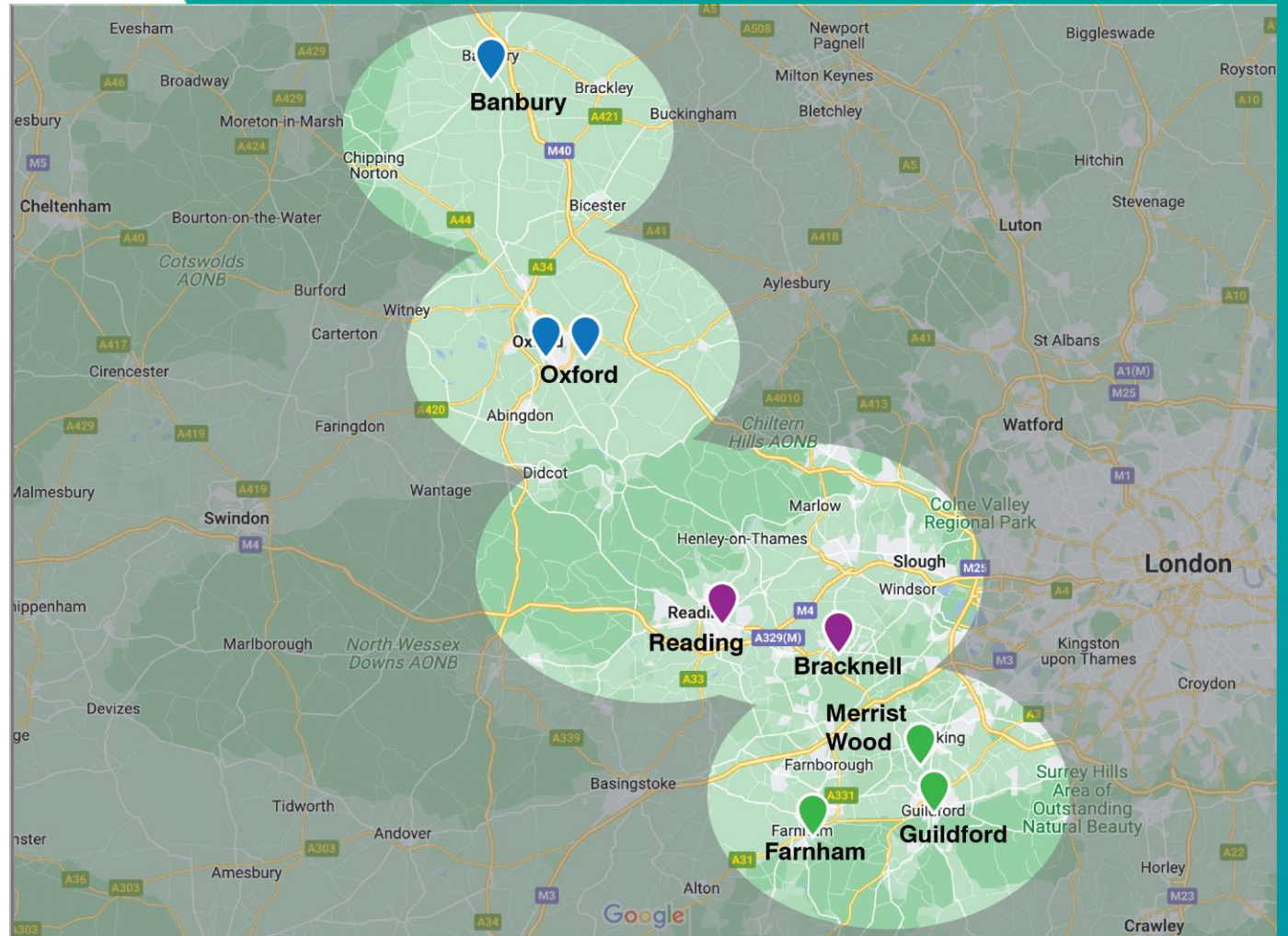




INTRODUCING ACTIVATE LEARNING

Activate Learning is a group of learning organisations including secondary, further and higher education, workforce training and social enterprise.

We have seven colleges in the South East, across Oxfordshire, Berkshire and Surrey:





Post-16 options

After your GCSEs:

- Sixth Form
- College (vocational, T Levels, A Levels)
- Apprenticeship





What is college like?

Outstanding facilities

A grown-up environment, but with similar hours and holiday to school.

Firstly, we aim to get you **ready for working life** and that's why we can offer everyone the chance of **work experience** whilst you're studying with us.





ACADEMIC AND PROFESSIONAL STUDIES



CREATIVE INDUSTRIES



LANDBASED



LIFESKILLS



LIFESTYLES



TECHNOLOGY





PROFESSIONAL

Team player
Communicative
Customer focused
Nurate
Digital

AWARE

Empathic
Self aware
Reflective
Respectful
Mindful

RESILIENT

Persevering
Capable
Committed
Self-reliant
Adaptable



CONFIDENT

Motivated
Independent
Pro-active
Inquisitive
Positive

ENTERPRISING

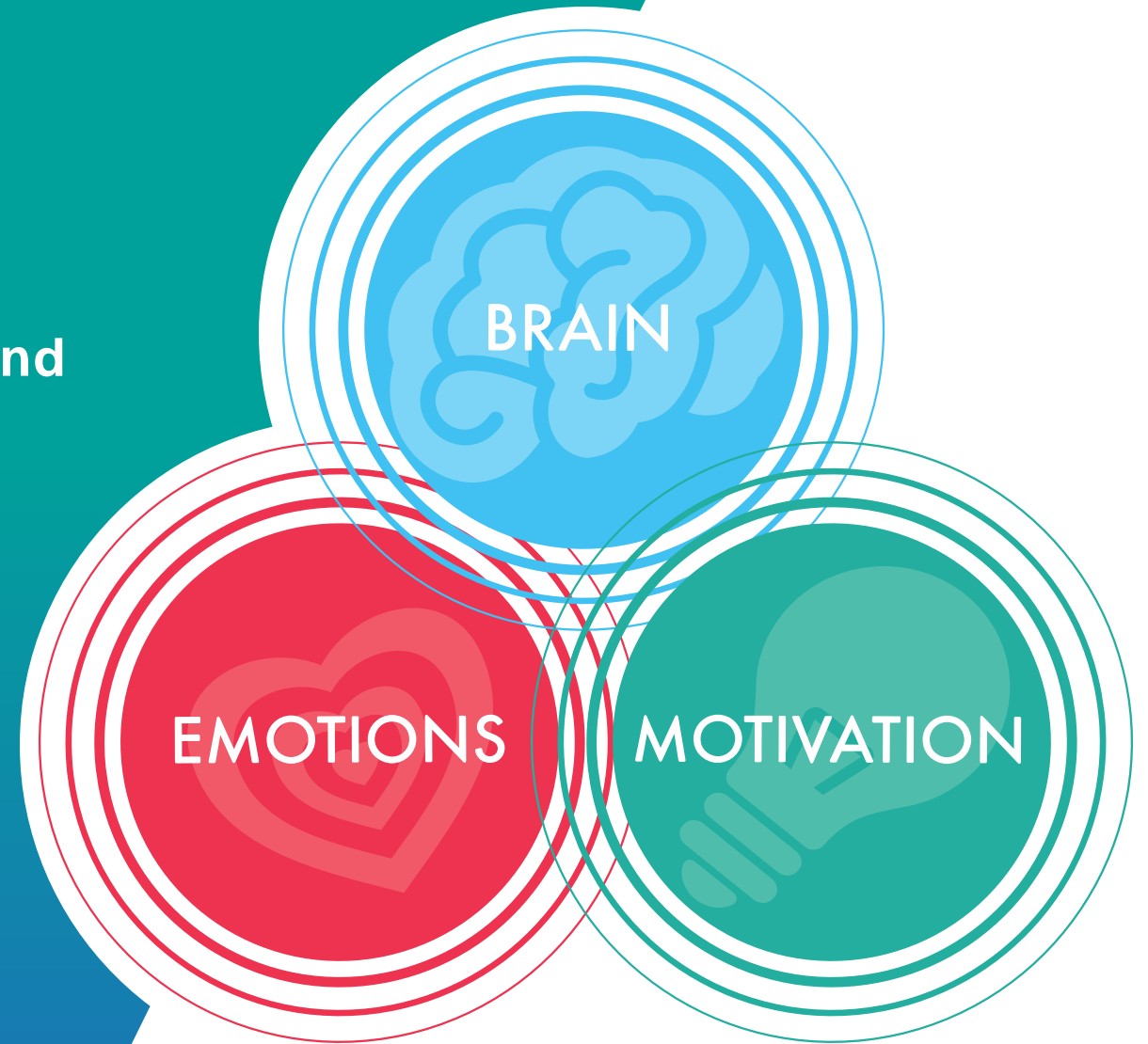
Leader
Resourceful
Risk taker
Business minded
Creative problem solver

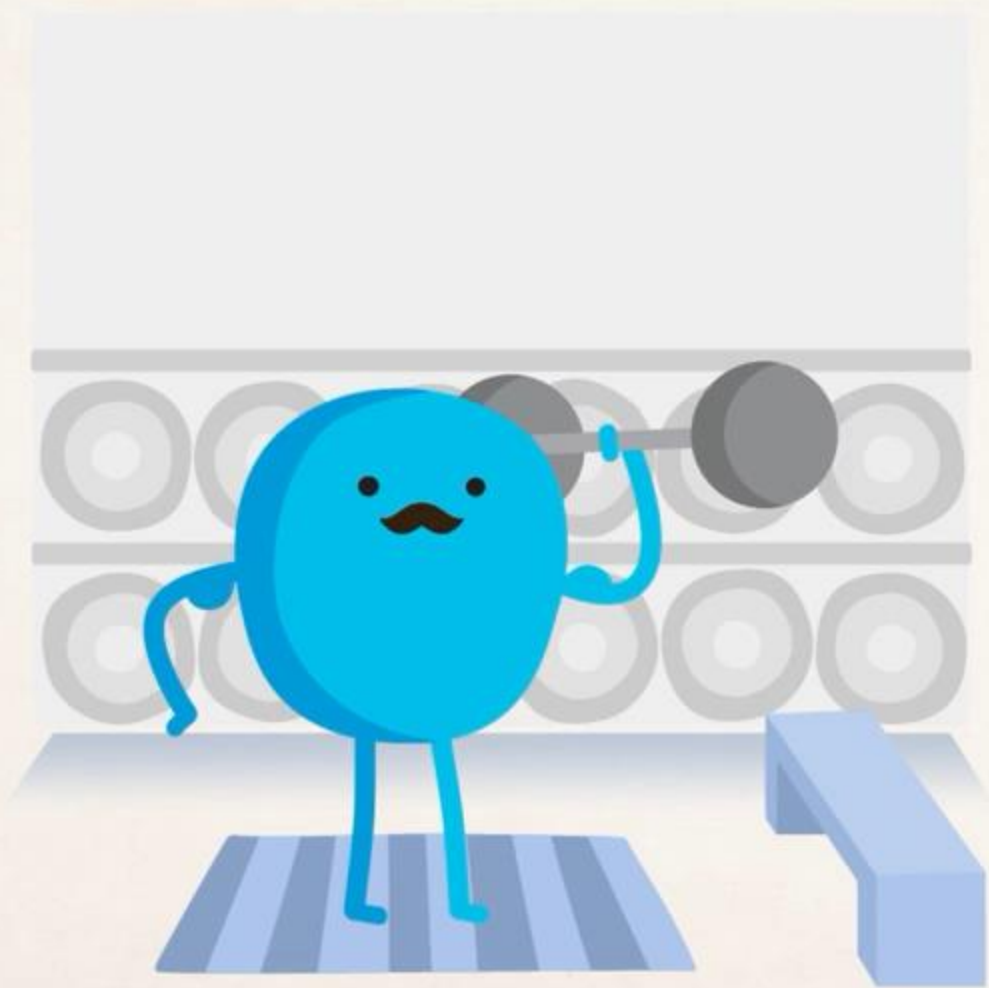


OUR LEARNING PHILOSOPHY

We understand how people learn best and how to work with every individual to remove traditional barriers to learning:

- > Everyone has the capacity to learn
- > Motivation is essential to success
- > The biggest block to learning is our own emotions and feelings of inadequacy







Guildford College





GUILDFORD COLLEGE

Fantastic facilities giving you the practical skills you'll need in your career..

- TV studio and Media production gallery
- Art & Design studio
- Photography studios and darkrooms
- Apple Mac suites
- Hairdressing salons
- Beauty Therapy salons
- Construction and Engineering workshops
- Drama and Dance studios
- Air cabin crew training room
- Industry standard Catering Facilities
- Esports studio





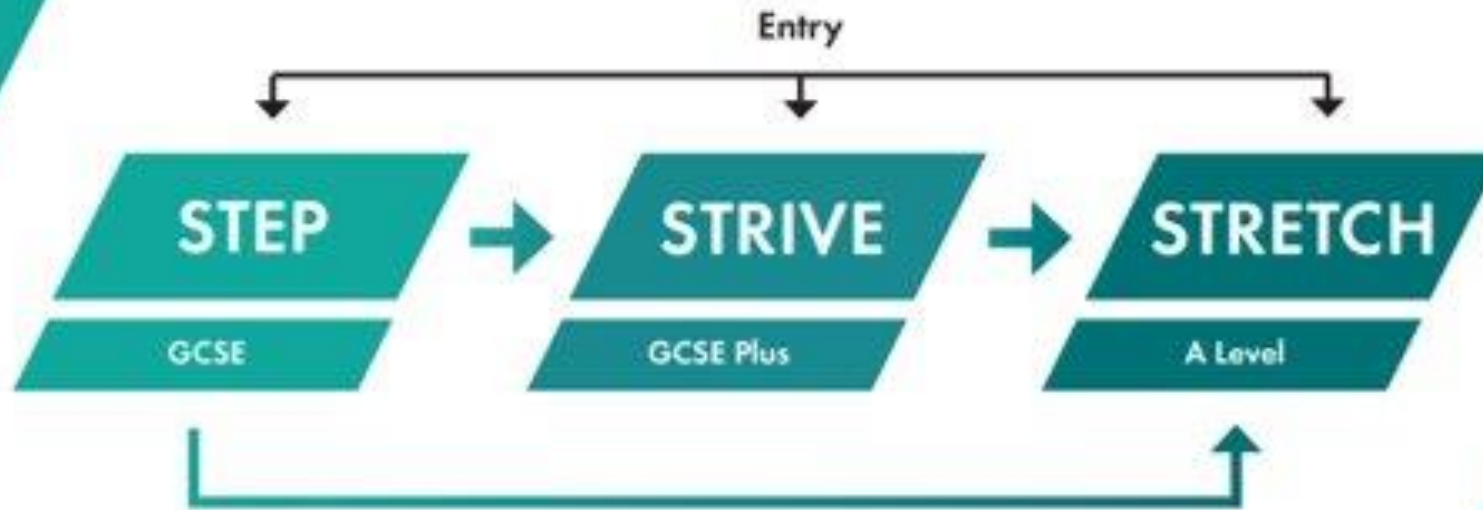
Courses at Guildford College

- A-Levels and GCSE's
- Beauty Therapy
- Business and Enterprise
- Childcare
- Computing
- Creative Media
- Electrical Installation
- Esports
- Hair and Make-up Artistry
- Hairdressing and Barbering
- Health and Social Care
- Hospitality and Professional Cookery
- IT and Gaming
- Media
- Performing Arts
- Travel and Tourism
- Visual Arts and Design





A Levels ▶ The Activate Learning Way





T Levels - What are they?

T-LEVELS
THE NEXT LEVEL QUALIFICATION

A new qualification that is equivalent to three A Levels:

- > 80% of the course is in the classroom, learning the skills that employers need. The other 20% is a meaningful industry placement, where you'll put these skills into practice.
- > Designed in collaboration with employers and businesses, so that you will learn everything you need to prepare for the workplace – with more than 300 hours of industry placements.
- > T Levels give you the option to move onto university or a higher apprenticeship.



T LEVELS GUILDFORD CAMPUS SEPTEMBER 2024

Level 2 Foundation
(previously known as
Transition) to T Level
available.

T Level (Level 3)

- Education and Early Years
- Health (Adult Nursing)
- Science
- Design Surveying and Planning for Construction (Civil Engineering)
- Digital Production, Design and Development



Merrist Wood College





£21 MILLION FUNDING APPROVED FOR MERRIST WOOD



Securing a sustainable future for land-based education in Surrey



Enhance educational facilities and meet future needs of learners



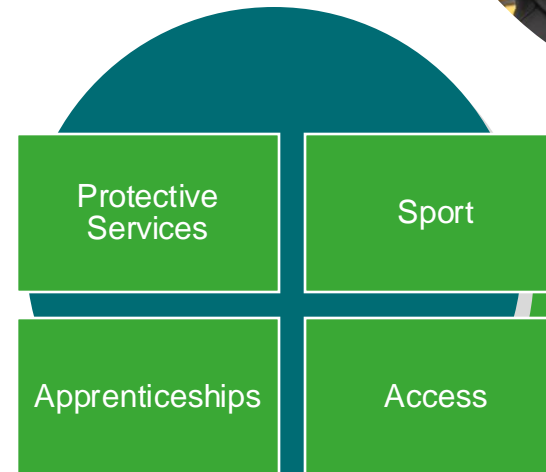
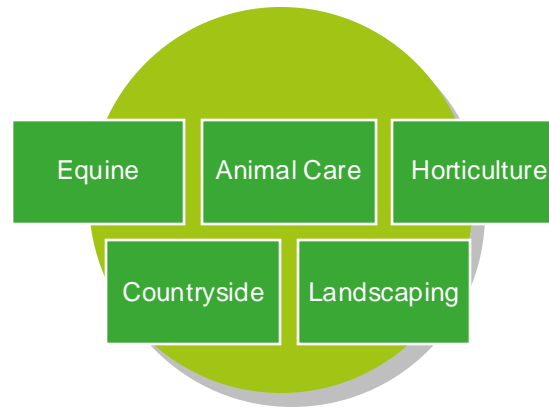
A major milestone for Merrist Wood!



New sustainable buildings and glasshouses



New state of the art learning spaces





MERRIST WOOD COLLEGE

You won't find facilities like ours at any other college in Surrey.....

- Animal Management Centre housing over 1000 animals
- Farm with rare breed animals
- Large indoor equine arena and stabling for up to 40 horses
- Glasshouses and nurseries
- Landscape workshops
- Gym and outdoor sports facilities
- 18-hole golf course





Courses at Merrist Wood College

- Agriculture
- Animal Management
- Arboriculture
- Countryside Management
- Environmental and Conservation Studies
- Football Coaching
- Horse Management
- Horticulture
- Landscape
- Public Services
- Sport, Coaching and Fitness





MAIN ROUTES TO SUCCESS

Full-time study programme:

Vocational

T Level

A Level

Apprenticeships:

Activate Apprenticeships

We also offer a range of Higher Education programmes, professional courses and Learning for Leisure options.



Your individual learning schedule will include:

- **Your main qualification** – the subject you choose to study
- **Maths and English** - if you do not achieve a GCSE pass grade – grade 4 or above – in Maths or English by the time you finish school, you must continue to study these subjects
- **Employability Skills** – work experience will give you the opportunity to develop and apply skills in a real working environment
- **Personal Development** – tutorial sessions and enrichment activities or events will help you develop your skills and improve your CV



Entry requirements:

Qualification	Entry Requirements
Entry Level	No formal entry requirements
Level 1	Range of GCSEs at grades 3-1
Level 2	Two to four GCSEs at grade 3 or above, including Maths and English, or equivalent.
Level 3 A Levels	Four or five GCSEs at grade 4 or above, including Maths and English, or equivalent.
T Level 3	Five GCSEs at grade 4 or above, including Maths and English, or equivalent (only at Oxford).

*Please note: this is a guide only as some courses may require specific entry criteria.



L3 Qualifications Compared

A Levels	BTEC Level 3	T Level
A*A*A*	Distinction*	Distinction*
AAA	Distinction	Distinction
BBB	↓	Merit
CCC	Merit	Pass (C or above on core component)
DDD	↓ Pass	Pass (D or E on core component)
EEE	↓	



Student Support

- > Advice and Guidance, supporting you with your chosen career pathway from the Employment and Careers Team
- > Financial support, childcare and travel bursaries
- > Learning Support, Pastoral Support and student coaches
- > On-site counselling





Applying to college



*Early application will reserve a place on your chosen course. Your offer is conditional, so you must meet the grade criteria. If you don't achieve this, there will be the opportunity to consider a lower level or an alternative course.



Activate Apprenticeships

www.activateapprenticeships.co.uk

- > Through Activate Apprenticeships, young people can get in and go far with some of the UK's biggest and brightest companies
- > Activate Apprenticeships brings a talent pipeline of 16,000 people, studying across the Activate Learning group
- > Actively working with over 400 companies in the local region and 1000 across the UK



APPRENTICESHIPS WE OFFER

- **Hair Professionals L2** (BWC, Reading, Oxford)
- **Advanced and Creative Hair Professionals L3** (BWC, Reading, Oxford)
- **Commis Chef L2** (Reading, Oxford)

- **Furniture Manufacturer L2** (Oxford)
- **Bespoke Furniture Making L3** (Oxford)

- **Teaching and Skills Teacher L5** (Reading)
- **Teaching Assistant L3** (Oxford, Reading, Guildford)
- **Adult Care Worker L2** (All)
- **Lead Adult Care Worker L3** (All)
- **Leader in Adult Care L4** (All)
- **Early Years Practitioner L2** (All)
- **Early Years Educator L3** (All)
- **Business Admin L3** (All)

- **Arborist L2** (MW)
- **Land and Horticulture L2** (MW)
- **Equine L2** (MW)
- **Senior Equine L3** (MW)

- **IT Technician L3** (Reading, BBL)
- **Cyber Technologist L4** (Reading, BBL)
- **Software Developer L4** (Reading, BBL)
- **Data Analyst L4** (Reading, BBL)
- **Autocare Technician L2** (Banbury)
- **Bricklayer L2** (Reading, BBL)
- **Installation & Maintenance Electrician L3** (BWC, Guildford)
- **Plumbing & Domestic Heating Technician L3** (Guildford, Reading)
- **Site Carpentry L2** (Reading, Guildford, BBL)
- **Bicycle Mechanics L2** (Reading, BBL, MW)

FINDING THE RIGHT APPRENTICESHIP

- Our recruitment team are on hand to support you with finding the right employer for you Apprenticeship
- We advertise vacancies on our website (Activate Apprenticeships Vacancies) where you can also register your interest.
- Visit the National Apprenticeship Service – www.gov.uk/apply-apprenticeship
- Activate Apprenticeships – 01865 551015





Career Options

Construction & Engineering

Site Manager

Civil Engineering Technician

Mechanical Engineer

IT Systems Architect

Carpenter

Bricklayer

Electrician

Plumber

AaPS

Accountant

Researcher

Business Development Manager

Nursery Manager

Pharmacy Technician

Social Worker

Cabin Crew

Events Executive

Midwife

Lifestyles

Beauty Salon Manager

Esports Business Development Manager

Chef

Makeup Artist

Police Officer

Sports Coach

Security Guard

Hair Stylist

Physiotherapist

CreaTech

Web designer

Camera Operator

Film/TV Producer

Graphic Designer

Music Producer

Theatre Manager/Actor

Illustrator

Sound Engineer

Social media Influencer

Photographer

Fashion Designer

Land

Zoo Keeper

Gardener

Tree Surgeon

Countryside Ranger

Competition Groom

Farmer

Sales Manger

Landscape Gardener

Animal Rescue



Careers in the Spotlight

Public Services

In 2022, there were 3.35m public service job roles in the UK

Sports

Surrey has 57% above the national average number of jobs in the Sports and Fitness Industry

Performing Arts

Music and arts contribute over £4bn/year to the UK economy

Arboriculture

Jobs in Arb are 34% above the national average in Surrey with a 10% increase predicted by 2027.

Animal Management

Animal Care industries contribute £16.6 billion to the UK economy.

Esports

UK = largest video games sector in Europe – employs around 47,000 across related industries

Engineering

1.31m jobs in 2022 – over 39,000 openings per year across the UK. 7% more jobs in Southeast.

Business & Enterprise

2022-2027 = increase by 130,000 job openings

Hairdressing

92,000 jobs in 2022; 4,000 openings per year



Travelling to Guildford College



By road

- Free student car park on site (parking permit required)

By bike

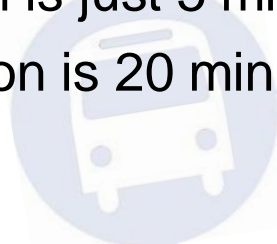
- Cycle racks are available

By bus

- **No.3 Arriva** bus runs directly from Guildford Friary Bus Station
- Takes just 5 minutes to get to the College
- Buses run to Guildford Friary Bus Station from many local areas

By train

- London Road station is just 5 minutes walk away from the College
- Main Guildford Station is 20 minutes walk away from the College





Travelling to Merrist Wood College



By road

- Free student car park on site

By bike

- Cycle racks are available

By bus

- **'The Kite'** and **No.17 Arriva** buses run directly from Guildford Friary Bus Station to the College
- Buses run to Guildford Friary Bus Station from many local areas
- The College is 5 minutes walk from the Fairlands Estate bus stop



By train

- There is a train station in Worplesdon, but it is easier to get to the College from the main Guildford Station
- Regular buses run from Guildford Station to the College

OPENEVENTS

@ Farnham College

Saturday 12 October 2024

@ Guildford College

Wednesday 16 October 2024

@ Merrist Wood College

Wednesday 9 October 2024



Frequently Asked Questions:

- Do I need to book a place on an Open Event?
- How do I know what is the right learning environment for me?
- What if I do not get the grades for my first-choice course? (Back-up Plan)
- Can I apply for more than one course?
- When should I apply?
- What if I change my mind?

**Thank
You**

