

George Abbot Bulletin

...the weekly round-up and preview for GAS parents and carers



Headteacher's Message

23 April 2021

All

The Summer Term is with us and has brought a dry school field for breaktimes, sunshine and smiles. It has been so good to observe the simple pleasure of students sitting with their friends, chatting, laughing and playing football. Our Year 11s and Year 13s have come back to school focussed and ready for the challenge of their May assessments. Sports clubs are up and running – athletics, tennis, cricket all reminding us that the warmer months are ahead. Our first Bronze DofE expedition goes out today – a true sign of progress for us all as we anticipate the next set of COVID-19 regulations lifting in May. Thank you for continuing to support George Abbot's adoption of face masks in classrooms, corridors and crowded indoor spaces. Students have been exceptional in remembering to wear their masks alongside staff and in understanding that we are all working together to keep our school safe.

Unfortunately, our scheduled delivery of lateral flow testing kits has not yet been received in school for this term. We have contacted the Department for Education several times and can but trust they are en route. I imagine that the reality of the scale of George Abbot hasn't quite reached the dispatch department! Please be assured that we will distribute kits to students as soon as we receive them. In the meantime, if your supplies have run out, you are able to pick up testing kits locally from testing centres and pharmacies. We are really grateful for your continued registering of any results that you get from tests to both the NHS and the school via the following links:

1. **The Government:** www.gov.uk/report-covid19-result Results can also be reported via telephone by calling 119 (free from mobiles and landlines). Lines are open every day, 7am to 11pm.
2. **George Abbot School:** <https://forms.office.com/r/aa5GPS6gQM>

This term, as a school community, we are having a specific focus on doing everything in our power to eradicate the use of inappropriate sexualised language from George Abbot. We have worked really hard to establish a culture that celebrates difference, values equality and respects every individual. We must educate all of our students so that they leave our school knowing that language which degrades and humiliates is not acceptable. Challenging 'banter' is vital. Equally, we will be working closely with our students to make sure that we do everything we can to ensure easy systems for students to report any concerns and to remove any perceived barriers to an open and trusting school culture. Our RSHE programme is extensive and students explore a range of important issues through skilled teaching:

- Healthy relationships
- Equal opportunities
- Consent
- Peer on peer abuse
- Gender, identity and stereotypes
- Sex and relationships, pornography
- Responsible intimate relationships
- Appropriate behaviour, sexual behaviour, abusive relationships

This understanding is the cornerstone of ensuring that our young people are able to keep themselves safe and develop a really secure sense of what is healthy and positive for their future relationships. A key issue is that of consent – ensuring our children have the opportunity to talk to trusted adults about this is essential. Attached to this Bulletin is a useful single guidance sheet to support parents/carers in talking about this topic with your teenagers. I would really encourage you all to seek a quiet moment when there is time to talk about this over the coming days. Upcoming Bulletins will include further information for parents/carers on the topics above. Our partnership is at the heart of ensuring that George Abbot students become responsible, respectful adults, who know and do what is right.

Kate Carriett
Headteacher

[Return to home page](#)

Thursday, April 22

	Week ending Apr 18	24-Hr change	Weekly trend
Guildford	29.5	↑	83%
Woking	24.8	↓	-14%
England	24.2	↑	-16%
Epsom & Ewell	17.4	↓	8%
Runnymede	16.8	↑	0%
Elmbridge	15.4	↑	91%
Surrey Heath	13.4	↑	20%
Spelthorne	12.0	↑	-25%
Waverley	11.9	↑	50%
Mole Valley	11.5	↑	-9%
Reigate & Banstead	11.4	→	-6%
Tandridge	5.7	→	-17%

Infection rate=7-day total cases per 100,000 people
Source: Public Health England /Surrey Live - Created with Datawrapper

Lesson omission		
Week Commencing	A or B	Lesson omission
26 April	A	5
3 May	B	1
10 May	A	2
17 May	B	3
24 May	A	4

Notices

IMPORTANT DATES

w/c 26 April 2021= Week A, no lesson 5

Whole School

⇒ Medical Room Procedures

Students should **not** contact parents/carers directly, using their mobile phones, if unwell. If this happens please let the school know immediately.

Please can you remind your child they must report to the Medical Room so they can be assessed and if they do not have a temperature or sickness/diarrhoea we will always try and encourage them back to class in the first instance.

As you can appreciate, the staff in the Medical Room get an extremely high rate of students attending on a daily basis and they must make a decision based on existing medical conditions and how the child presents at the time, which is never an easy job.

<http://www.nhs.uk/Livewell/Yourchildatschool/Pages/Illness.aspx>

If your child has developed a medical condition that the school needs to be aware of, or management of their existing condition or medication has changed in any way, it is your responsibility to keep the school informed so that the appropriate staff are aware of any issues that may arise. Please contact the Head of Year or the Medical Room with any updates or changes. You will need to complete and return an Individual Health Care Plan so that we can attach it to your child's individual record.

⇒ WisePay Update

Please see letter attached from WisePay.

⇒ Arriva Bus Summer Service Information

Details of Arriva Bus direct debit schemes can be found here:

www.arrivabus.co.uk/monthlytickets

- Child/Scholar tickets are for students up to and including Year 11.
- Student tickets are for any student (Sixth Form upwards) regardless of age, as long as they hold a valid student ID.

For students, parents and carers enquiries, our dedicated mailbox for any questions is talktous@arriva.co.uk. For the most up to date timetable, please click [here](#).

⇒ Vacancies at George Abbot

Please see the following page of the school website for further details on our current vacancies: <https://www.georgeabbot.surrey.sch.uk/recruitment/>. Please do forward to any friends or colleagues you think might be interested. Current opportunities:

- Food and Nutrition Technician

⇒ Surrey Adult Learning Bulletin

Please find the latest edition of the Family Learning Parent Bulletin here: <https://mailchi.mp/6b819a9ec027/family-learning-parent-bulletin-733200> [Return to home page](#)

Year 13

⇒ May Assessment Timetable

Please find attached the final version of the May Assessment Timetable. During this period, the students will be on study leave and will not be required to attend their timetabled lessons.

If you are aware of circumstances that may affect your son or daughter's performance in the May Assessment, there is a process called 'Special Consideration' which can be applied for. Special Consideration is a post-examination adjustment to a candidate's mark or grade. This is to reflect temporary illness, temporary injury or some other event outside of the candidate's control at the time of the assessment. It is applied when the issue or event has had, or is reasonably like to have had, a material effect on a candidate's ability to take an assessment or demonstrate his or her normal level of attainment in an assessment.

Should you believe this applies to your son/daughter, you should contact their Head of Year in the first instance with all the relevant information to enable the school to take this into consideration.

Year 11

⇒ May Assessment Timetable

Please find attached the final version of the May Assessment Timetable. During this period, the students will be on study leave and will not be required to attend their timetabled lessons.

For Year 11 Revision Resources, please click [here](#).

Pathway: SLE\Documents\SLE Lessons & Resources\0. Assessments Year 11 Past Papers and Key Revision

If you are aware of circumstances that may affect your son or daughter's performance in the May Assessment, there is a process called 'Special Consideration' which can be applied for. Special Consideration is a post-examination adjustment to a candidate's mark or grade. This is to reflect temporary illness, temporary injury or some other event outside of the candidate's control at the time of the assessment. It is applied when the issue or event has had, or is reasonably like to have had, a material effect on a candidate's ability to take an assessment or demonstrate his or her normal level of attainment in an assessment.

Should you believe this applies to your son/daughter, you should contact their Head of Year in the first instance with all the relevant information to enable the school to take this into consideration.

Year 10

⇒ Spring Progress Reports

Year 10 progress reports will be released on **Monday 26 April** and will be available for you to view via the SIMS Parent App (<https://www.sims-parent.co.uk>) as a PDF file.

Here is a report template, including the key, to give you an idea of what the report contains.

Forename SURNAME				
Registration Group				
Attendance:		Achievement:		No. of Lates:
Subject	SAM %	TEG	CPI	Engagement
Business				
English Language				
English Literature				
Core PE				
Geography				
German				
Graphics				
Mathematics				
PSE				
RE				
Science				

SAM %	Significant Assessment Mark as a percentage.
TEG	Teacher Estimated Grade for the end of year 11.
CPI	Current Progress Indicator based on TEG.
Aspiring	Working towards making expected progress, based on TEG.
Achieving	Working towards exceeding expected progress, based on TEG.
Excelling	Exceeding expected progress, based on TEG.

Year 10

The attendance percentage and the number of lates are based on the morning and afternoon registration session. The morning registration mark is recorded by the form tutor and the afternoon registration mark is recorded by the teacher of the last lesson of the day.

The behaviour points show the number of sanctions logged this term so far, the achievement points show the number of house points the student has achieved.

The current progress indicator shows how well the student is making progress based on the targets which we have set for students using all of the available prior attainment data. It is individualised for each student and for each subject they study.

So far the students in English have only completed an English Literature assessment so this data is being reported as also the English Language assessment.

As each assessment is unique it may be that the same score for two different assessments results in a different CPI. This is entirely possible and is similar to different subjects or papers at GCSE having different grade boundaries.

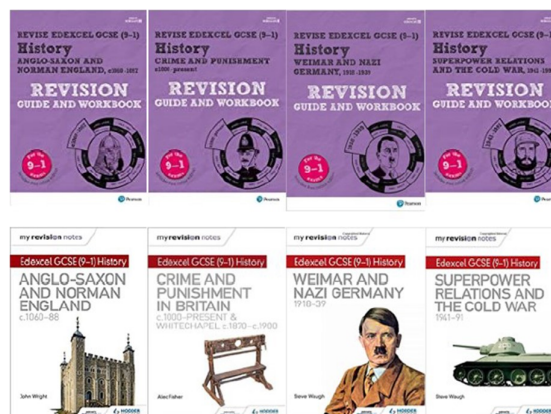
If you have any questions relating to these reports, or need help registering for the SIMS Parent App, please contact us at simsapp@georgeabbot.surrey.sch.uk so that we can help.

Year 9

⇒ GCSE History Revision Guides

To help your child with their revision and to consolidate what they have learnt in class, we recommend that they have their own copy of a History revision/guide workbook. (This would of course be particularly useful if they have to be absent from school for any length of time due to COVID-19).

There is a wide selection of History revision guides on the market but below is a selection of revision guides our students have found useful in the past. The purple guides are more visual and the white have more exam advice.



Year 8

⇒ IMAG Event—Forensic Science: Facial Recognition

The Guildford 11-19 Partnership IMAG programme aims to provide extracurricular opportunities for Interested, Motivated & Able pupils in the Guildford area to capture students' imagination and interest outside of the classroom and encourage them to take the initiative and engage with programmes and events to enhance their education. On Wednesday 28 April 2021 from 5.00-6.00pm, Tormead School are hosting an on-line Forensic Science: Facial Recognition seminar available to students in any year and most suitable for pupils in Years 7 to 8. Every student can apply as the event is on-line and it totally free of charge. Please encourage your children to take up this opportunity. If your child is interested in attending, please visit the IMAG website to find more information and to register your attendance: www.imag.education/events. This event will be hosted on-line using Zoom; registered students will be sent the required links with instructions on how to join the event nearer the time. For more info please [click here](#).

Please email ecave@georgeabbot.surrey.sch.uk if you require further assistance.

Year 7

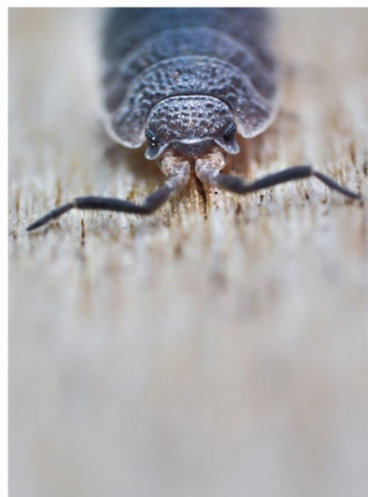
⇒ IMAG Event—Forensic Science: Facial Recognition

The Guildford 11-19 Partnership IMAG programme aims to provide extracurricular opportunities for Interested, Motivated & Able pupils in the Guildford area to capture students' imagination and interest outside of the classroom and encourage them to take the initiative and engage with programmes and events to enhance their education. On Wednesday 28 April 2021 from 5.00-6.00pm, Tormead School are hosting an on-line Forensic Science: Facial Recognition seminar available to students in any year and most suitable for pupils in Years 7 to 8. Every student can apply as the event is on-line and it totally free of charge. Please encourage your children to take up this opportunity. If your child is interested in attending, please visit the IMAG website to find more information and to register your attendance: www.imag.education/events. This event will be hosted on-line using Zoom; registered students will be sent the required links with instructions on how to join the event nearer the time. For more info please [click here](#).

Please email ecave@georgeabbot.surrey.sch.uk if you require further assistance.

Focus on—RSPCA Photography Awards

Congratulations to Sam and Ben Hancock-Smith who have both won runner up prizes for their photography in the RSPCA Photography awards! This year the competition attracted 11,000 entrants. Judges met up over Zoom to consider 187 photographs across nine categories. A massive well done to Sam and Ben on their achievements. Please see the link to the RSPCA competition catalogue here: <https://view.pagetiger.com/dpendhu/1?>



SMALL WORLD RUNNER-UP

'Woodlouse'
Sam Hancock-Smith, 13

RSPCA YOUNG PHOTOGRAPHER AWARDS 2020 | SMALL WORLD



16-18 YEARS RUNNER-UP

'The chase'
Ben Hancock-Smith, 16

RSPCA YOUNG PHOTOGRAPHER AWARDS 2020 | 16-18 YEARS

29

Lockdown Big Band

Over the last lockdown, our wonderful Big Band have put together their final video performance of Stevie Wonder's 'Isn't She Lovely'. We were especially delighted to join with our fantastic George Abbot Music Department Alumni, who generously took the time to record and send over parts, allowing our current players to experience playing with some of our best and brightest stars! We hope you enjoy the culmination of our Lockdown Big Band repertoire!



**GEORGE ABBOT LOCKDOWN BIG BAND
FT. ALUMNI ALL-STARS**

[Return to home page](#)

Extra-Curricular: Summer Term

Sports Round up

What a return to extra-curricular sport! After the easing of restrictions, the PE department have been able to offer a more comprehensive activity selection. This term sees the return of 'Summer' sports, such as Athletics, Cricket, Rounders and Tennis. In the first week, we have seen over 400 students attend a club. It's been fantastic to see and great to be a part of. You can find the Extra Curricular Timetable here: <https://www.georgeabbot.surrey.sch.uk/extra-curricular/>

We also will soon return to competitive fixtures against other schools, as well as the much-missed George Abbot Sports Day. In the meantime, the department are looking forward to hosting the next House Sports Events.

Please see below for some information on the upcoming Boys Rugby and Girls Football competitions.

Year 8 – Tuesday 4 May 2021- Period Y/4 (12:15pm) and break 3 (1:30pm)

Year 9 – Wednesday 5 May 2021- Period Y/4 (12:15pm) and break 3 (1:30pm)

Year 7 – Friday 7 May 2021- Period 3/X (10:35am) and break 2 (11:50am)

- A great event where students come out of lessons to represent their house at a sport.
- House representatives (selected by PE department) will oversee and help the selection of 10 students per house (Rugby: 7 a side/3 subs, Football: 6 a side/ 4 subs).
- Team sheets will be issued from the PE department to those reps, they need to be completed and handed back in by Friday 30 April.
- Competition is timetabled when half of the year group are on PE to minimise disruption.
- Those selected and not in PE will come down at the designated time. Those in PE, will still have their normal lesson.
- Those selected can wear their house shirt with their PE kit on the day.
- Rugby players will need a gum shield, footballers will need shin pads to be able to play.

Any questions, please contact Mr Rodgers, brodgers@georgeabbot.surrey.sch.uk.

Performing Arts

DANCE DEPARTMENT SPRING TERM EXTRA CURRICULAR CLUBS		
DAY	LUNCH TIME	AFTER SCHOOL
Monday	Rehearsal: Studio Space for Year 13 A Level students.	3:15pm—4pm Tap Technique and Performance. 4pm—4:45pm Musical Theatre Technique and Performance.
Tuesday	Rehearsal: Studio Space for Year 11 GCSE students.	3:15pm—4pm Jazz Technique and Performance. 4pm—4:45pm Junior Dance Company.
Wednesday	Rehearsal: Studio space for Year 10 GCSE students.	3:15pm—4:45pm A Level and GCSE Dance Exam Rehearsals.
Thursday	Rehearsal: Studio space for Year 12 A Level dance.	3:15pm—4pm Contemporary Technique and Performance. 4pm—4:45pm Senior Dance Company.
Friday	Rehearsal: Studio Space open to all.	
MUSIC DEPARTMENT SPRING TERM EXTRA CURRICULAR CLUBS		
DAY	AFTER SCHOOL	
Tuesday	Upper Voices Year 9 Theory GCSE Composition	
Wednesday	Orchestra	
Thursday	Big Band	
Friday	Concert Band	

Careers

We are continuing to update the careers page on our website with lots of opportunities for students.

Careers opportunities:

Please visit: <https://www.georgeabbot.surrey.sch.uk/careers-opportunities/>

Apprenticeship opportunities:

Please visit: <https://www.georgeabbot.surrey.sch.uk/apprenticeship-opportunities/>

Virtual Work Experience opportunities:

Please visit: <https://www.georgeabbot.surrey.sch.uk/virtual-work-experience/>

New opportunities this week include:

- Speakers for Schools – Virtual Talks, Insight Days & Work Experience Opportunities
- UK University Search – Student Stream Website
- Nuffield Research Placements
- Early Years Educator Apprenticeship (Level 3) – Chilworth School Nursery
- Arcadis Apprenticeships

PTA



Kelly's March Marathon

A huge thank you to everyone who participated in and donated to the Kelly's March Marathon. We are delighted to say that we raised £2,700 which is amazing and every single penny will be going to the **George Abbot Hardship Fund**. This fund is being used to pay for uniform, food, laptops, counselling, school resources and equipment for George Abbot families who need that extra support at this time. THANK YOU!

- The top fundraiser was George Abbot's very own **Mr Huelin**, who raised a total of £285! Congratulations Mr Huelin and thank you very much to you and your sponsors. Your £50 Fitstuff voucher is on its way to you.
- The longest distance in one session was an incredibly impressive 39km which was completed by George Abbot parent **Andrea Thomas**. Congratulations, thank you and just WOW! Your £50 Fitstuff voucher is on its way to you.

We promised a snood for every entrant. These have finally arrived and will be distributed to students who entered. For parents/carers, as we are trying to reduce the amount of visitors to school, we will email you to ask your son/daughter to visit Raynham Office to collect your snood from there. Please contact pta@georgeabbot.surrey.sch.uk if your child is unable to collect on your behalf.

Next meeting

Please come along to the next PTA meeting on Tuesday 27 April at 7.30pm, we could really do with your support. It is taking place via Zoom and we would love to see you. Link: <https://us02web.zoom.us/j/6333635977>

Raynham Hall stage project

Recently the PTA have been focusing their fundraising on a new stage and seating area for the Performing Arts block. As a result of further research and quotations, the work required to carry out this refurbishment will require a certain amount of restructuring and much more is involved than initially thought. So we've decided that this money should remain with Performing Arts but be used to revamp the Raynham Hall stage and lighting area.

Best wishes and stay safe, from the PTA.

George Abbot School
Woodruff Avenue
Guildford
GU1 1XX
01483 888000