

George Abbot Bulletin

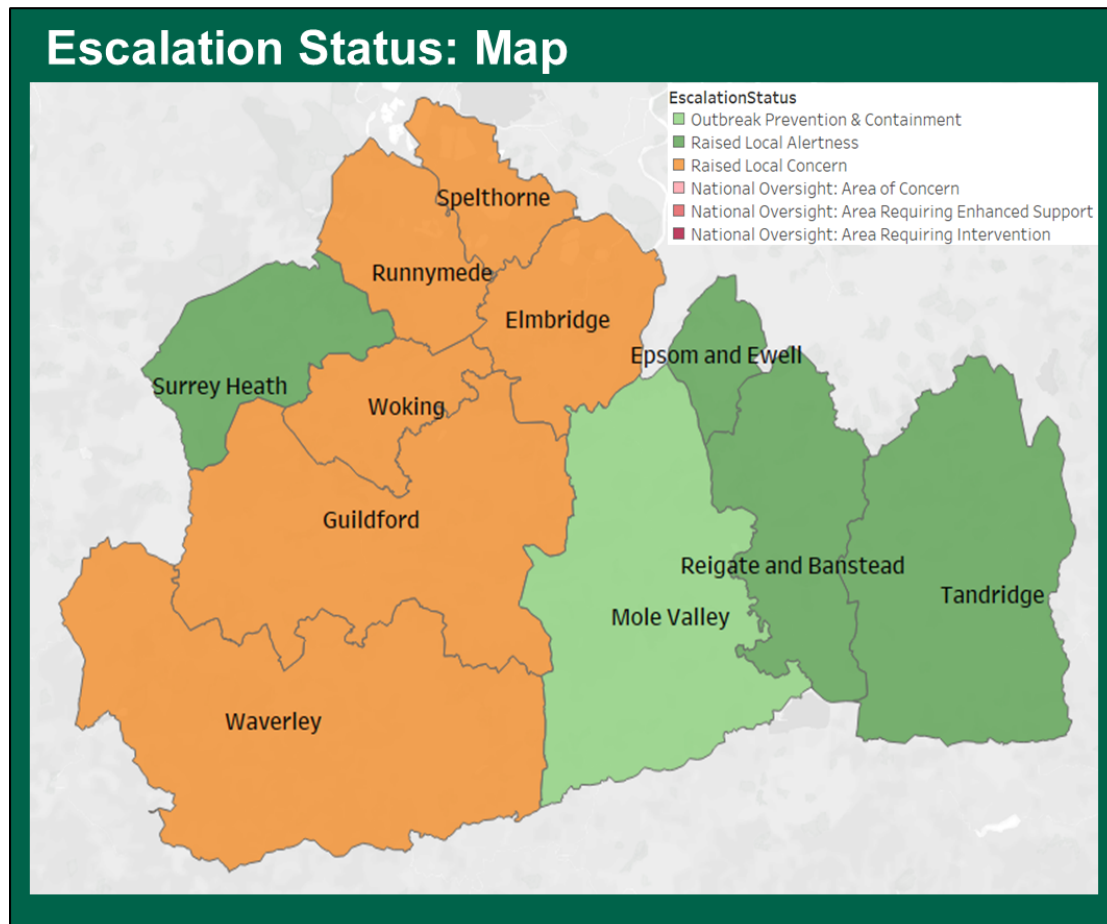
...the weekly round-up and preview for GAS parents and carers

Headteacher's Message

09 October 2020

All

This has been a week when our George Abbot Community has clearly seen the impact of COVID-19 in our community. Guildford area has now joined Waverley, Woking, Elmbridge, Runnymede and Spelthorne as areas of Raised Local Concern. The next step up is an Area of Concern with National Oversight.



We want our students to remain in school gaining the education that is SO important following the national lockdown. To remain in school we have to take the risks to our community immensely seriously. As you know, we have a detailed risk assessment in place, but a document in itself will not protect us. The actions of our students and staff in following those procedures are the key. Just as in this bulletin message, my staff message of this week reiterates the same thing.

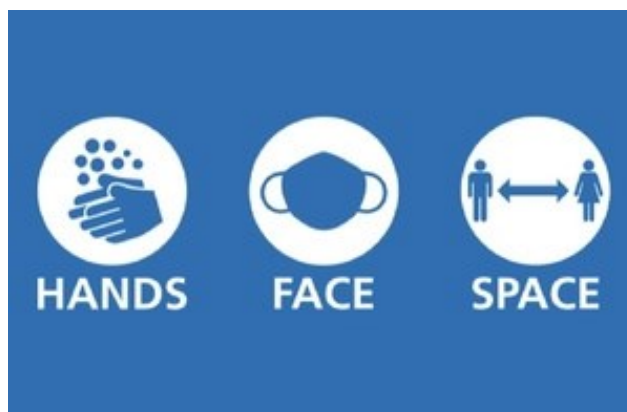
As we see more cases in our community, this information from Public Health England may be helpful to all families:

1. If you have been within 2m for 15 minutes of a person who has tested positive for COVID-19 or within 1m for 1 minute or more (e.g. face to face or touching) you must self-isolate for 14 days from 2 days before the person first got symptoms.
2. This 14 days does not change even if a person who has been in contact gets a test done and the test is negative - they still isolate for 14 days to allow for incubation periods.
3. This isolation period applies to people who have been in direct contact only as per point 1 above.
4. If a child is sent home to isolate as they have been in contact with a person who has tested positive, the rest of their family does not need to isolate unless the person who has been in contact then develops symptoms.
5. At that point, the new person with symptoms should immediately arrange a COVID-19 test.

[Return to home page](#)

Our Year 7s who are at home have been really good at engaging with the work we have set and attending their Zoom lessons. We are all learning about how to manage live classrooms of our younger year groups remotely and parent feedback has been willingly received! We will be asking every parent to sign an agreement relating to live Zoom lessons. It is essential that we are all aware of the safeguarding practice that is standard in schools across the country. As classrooms effectively move into our homes, expected protocols become even more important. We will publish this agreement shortly.

In closing, please can I ask you to reiterate three simple messages with your child, whether they be in Year 7 or Year 13:



Kate Carriett
Headteacher

DATES FOR YOUR DIARY	
THIS WEEK	WEEK A—no lesson 3 AUTUMN SERIES: A LEVEL RETAKES
Please visit www.georgeabbot.surrey.sch.uk/events for full calendar of events.	

Notices	IMPORTANT DATES
	w/c 12 October 2020 = WEEK A—there will be no lesson 3 AUTUMN SERIES: A LEVEL RETAKES
Whole School	<p>⇒ Face masks Please ensure you continue to send your child to school with a face mask. A lot of students having been coming to school without one. It is compulsory to wear one in corridors at all times.</p> <p>Limited budgets mean we cannot provide any more free face masks for students. 50p per mask will be charged on WisePay.</p> <p>⇒ Local Community Please speak to your child about the following basic principles of being good members of our local community:</p> <ul style="list-style-type: none"> • be mindful of keeping a distance from others, including passers by, on your way to and from school. • make sure you do not spit at any time—doing this on a public pavement is really read and dangerous in a COVID-19 situation. • do not loiter outside people's houses. • remember you represent the school in all that you say and do—do not swear and always present your best manners. <p>⇒ Uniform Shop—Updated opening hours Monday 12 October: 3-5.30pm Wednesday 14 October: 3-6pm</p>

Sixth Form

⇒ UNIVERSITY OF LAW – Criminal Investigation Day with support for care-experienced and estranged students

This session, following our Criminal Investigation Day, details the support that The University of Law can offer to students who have had experience of care or are estranged from their family network. We will go through financial and pastoral support that students can receive, and a Q&A session with a member of our Welfare and Support team.

To book onto our Criminal Investigation Day with a place on our care-experienced and estranged support session, please click [here](#). You'll then receive all the information for both workshops.

*Please note that George Abbot has not organised this event and all booking must be done directly via the booking link above. **PLEASE ONLY USE YOUR STUDENT SCHOOL EMAIL ADDRESS AND NOT A PERSONAL ADDRESS. YOU DO NOT NEED TO ADD IN A PHONE NUMBER.** We would also like to remind you to practice safe internet use and only ever interact with a speaker if you are part of a group. Parents please note that George Abbot cannot take any responsibility for the students whilst viewing and/or interacting in workshops etc. If you have any questions or queries please contact: enash@georgeabbot.surrey.sch.uk*

⇒ Medic Mentor—Live Virtual Work Experience

Medic Mentor in partnership with University Hospital at the Queen Elizabeth's Hospital in Birmingham launching a Virtual Medics Work Experience to any student in the UK wanting to become a doctor, dentist or vet. For more information, please see the leaflet attached.

Year 11

⇒ UNIVERSITY OF LAW – Criminal Investigation Day with support for care-experienced and estranged students

This session, following our Criminal Investigation Day, details the support that The University of Law can offer to students who have had experience of care or are estranged from their family network. We will go through financial and pastoral support that students can receive, and a Q&A session with a member of our Welfare and Support team.

To book onto our Criminal Investigation Day with a place on our care-experienced and estranged support session, please click [here](#). You'll then receive all the information for both workshops.

*Please note that George Abbot has not organised this event and all booking must be done directly via the booking link above. **PLEASE ONLY USE YOUR STUDENT SCHOOL EMAIL ADDRESS AND NOT A PERSONAL ADDRESS. YOU DO NOT NEED TO ADD IN A PHONE NUMBER.** We would also like to remind you to practice safe internet use and only ever interact with a speaker if you are part of a group. Parents please note that George Abbot cannot take any responsibility for the students whilst viewing and/or interacting in workshops etc. If you have any questions or queries please contact: enash@georgeabbot.surrey.sch.uk*

Year 10

⇒ UNIVERSITY OF LAW – Criminal Investigation Day with support for care-experienced and estranged students

This session, following our Criminal Investigation Day, details the support that The University of Law can offer to students who have had experience of care or are estranged from their family network. We will go through financial and pastoral support that students can receive, and a Q&A session with a member of our Welfare and Support team.

To book onto our Criminal Investigation Day with a place on our care-experienced and estranged support session, please click [here](#). You'll then receive all the information for both workshops.

Year 10	<p><i>Please note that George Abbot has not organised this event and all booking must be done directly via the booking link above. <u>PLEASE ONLY USE YOUR STUDENT SCHOOL EMAIL ADDRESS AND NOT A PERSONAL ADDRESS. YOU DO NOT NEED TO ADD IN A PHONE NUMBER.</u> We would also like to remind you to practice safe internet use and only ever interact with a speaker if you are part of a group. Parents please note that George Abbot cannot take any responsibility for the students whilst viewing and/or interacting in workshops etc. If you have any questions or queries please contact: enash@georgeabbot.surrey.sch.uk</i></p>
Year 9	<p>⇒ Maths Test on Units 1-2 This will take place in lesson time during the week commencing 9 November 2020.</p> <p>You will need pen, pencil, ruler and calculator (middle bands only). We are not able to lend equipment.</p> <p>Unit 1 and 2 includes all the work you have covered during this term. For more information please see SMHW.</p>
Year 8	<p>⇒ Headphones On behalf of the Computer Science and ICT department, students are reminded that they are required to individually have a set of headphones for use in ICT lessons, which must be brought to every lesson as part of the lesson equipment.</p> <p>We are not able to provide headphones this year and with developments in our curriculum, students will be disadvantaged if they do not regularly bring them into lessons.</p>
Year 7	<p>⇒ Headphones On behalf of the Computer Science and ICT department, students are reminded that they are required to individually have a set of headphones for use in ICT lessons, which must be brought to every lesson as part of the lesson equipment.</p> <p>We are not able to provide headphones this year and with developments in our curriculum, students will be disadvantaged if they do not regularly bring them into lessons.</p>

Sport Extra Curricular Round Up

We have now completed 4 weeks of extra-curricular sport. Where possible, we have organised house competitions within each year group and each sport. Across Football, Netball and Basketball, pupils have participated in fiercely contested events.

The table below depicts the current House Sport standings after 4 weeks. With a few weeks to go on these current sports and the impending new sports being added, it's all to play for!

Year Group	Falcon	Gryphon	Martlet	Phoenix	Wyvern
Year 7	25	26	25	38	16
Year 8	6	14	4	13	18
Year 9	31	52	23	33	20
Total	62	92	52	84	54
Position	3rd	1st	5th	2nd	4th

Focus on - Black History Month

In support of Black History Month, Mrs Rose our Information Centre Manager, has produced a fabulous display of books and information in The Gallery. The display includes information on key moments in Black British History, Movers and Shakers in society, Poets and Writers and Global icons. Students can visit the Gallery at the times listed below.



B: M 2020

DIG DEEPER, LOOK CLOSER, THINK BIGGER

Break	Year Group
Break 1 (10.10-10.30)	Year 7
	Monday—Falcon
	Tuesday—Gryphon
	Wednesday—Martlet
	Thursday—Phoenix
Break 2 (11.50-12.15)	Friday—Wyvern
	Year 8 (any house)
Break 3 (13.30-13.55)	Year 9 (any house)



PTA

Second-hand Uniform

Thank you to everyone who donated uniform today we will sort the items and have them ready to be sold next week.



Our remote uniform shop is working well and open for business. We are only stocking branded goods and have a pretty good range of polos, jumpers, cardigans and rugby tops. Hoodies are in very short supply and currently we only have very small sizes. We accept PayPal as payment and will deliver locally for a flat rate of £2 – leaving the package on your doorstep to remain COVID safe.

Prices are as follows:

- £3 PE and house polos
- £3 Rugby tops and any other PE jumpers
- £5 Blazers, hoodies and PE trousers
- £2 PE shorts
- £1 ties

Please email: PTA@georgeabbot.surrey.sch.uk and see if we have what you need.



AmazonSmile

If you wish to support the PTA with no extra cost to you, [then shop via AmazonSmile](#). Amazon then donates to George Abbot Parent Teacher Association a percentage of what you spend.

EasyFundraising

So far, we have raised over £14,000 for the PTA for free! [Please sign up to easyfundraising](#). Over 4,000 sites will give us a free donation every time you shop online. This will help us continue to support people that rely on us.

Next Meeting

The next meeting will be held on 3 November, details to follow.

Keeping in Touch

You can keep up to date with what the PTA are doing by checking out [Twitter](#) (which we are going to start using again!), [Facebook](#) and [webpage](#).

Take care, from the PTA.



Support George Abbot School, Burpham

£14,258.06 429
Total raised Supporters

George Abbot School
Woodruff Avenue
Guildford
GU1 1XX
01483 888000

[Return to home page](#)